

A large, stylized graphic of the letter 'C' that frames the central text. The 'C' is composed of a thick, textured band that transitions in color from red at the top to purple at the bottom. The top of the 'C' is broken into several vertical segments, resembling a loading bar or a signal display.

# WELCOME!

We will begin shortly.

'Meet the Artists' Virtual Public Meetings | Bryn Mawr, Berwyn, Argyle and Lawrence Stations | June 6-7, 2023

# Red and Purple Modernization (RPM) Phase One:

## New Red Line Station Art

### MEETING OVERVIEW

- RPM Phase One Overview
- CTA Art Program Overview
- RPM Artist Selection Process
- Artist Presentations
  - William Conger – Bryn Mawr
  - Alice Hargrave – Bryn Mawr/Hollywood
- Community Engagement – Question & Answer Session



# RPM Phase One: Overview

Lawrence to Bryn Mawr Modernization

Red-Purple Bypass

Corridor Signal Improvements



# Lawrence



# Argyle

# Berwyn



# Bryn Mawr

# About CTA Public Art



Red Line 47<sup>th</sup> Street Station  
Jo Hormuth, Artist  
*Photo Credit: Aron Gent*

The Chicago Transit Authority (CTA) incorporates quality design in construction projects and, from time to time, commissions and installs public art for CTA riders and the communities it serves.

The CTA commissions professional artists to create original, site-specific artwork for permanent display in new and newly renovated transit facilities.

Original artworks contribute to each station's identity and enhance travel for CTA customers as well as regional, national and international visitors.



The new commissioned artworks enter the art collection of the Chicago Transit Authority.



**Red Line Jarvis Station**  
Tom Denlinger, Artist  
*Photo Credit: Aron Gent*



# About CTA Public Art



The CTA is home to an impressive collection of art including mosaics, image transfer artworks and sculptures.

More than 100 artworks are exhibited at 65 CTA stations and are seen daily by CTA customers.

The original artworks contribute to each location's identity and enhance travel for customers. Art in CTA facilities promotes a friendly, inviting atmosphere for these locations, which function as gateways to the communities they serve.

**For more information about CTA and CTA's public art collection visit: [www.transitchicago.com/art](http://www.transitchicago.com/art).**



Blue Line California station  
Patrick McGee, Artist  
Photo Credit: Aron Gent



# Public Art Projects for the RPM Phase One Project

## 5 Art Locations

### Stations:

- Bryn Mawr
- Bryn Mawr/Hollywood  
(station auxiliary entrance)
- Berwyn
- Argyle
- Lawrence

# Project Goals

**The CTA seeks to commission permanent contemporary artworks that:**

- Are of superior artistic merit
- Relate to the station location and environment
- Provide an improved and more attractive transit experience
- Are original in concept and execution and fabricated of safe, highly-permanent materials and processes
- Require minimal maintenance



# Call for Artists

On February 23, 2022, CTA advertised a *Call for Artists* for the RPM art project for Lawrence, Argyle, Berwyn and Bryn Mawr stations.

The *Call for Artists* was open to all living artists, both emerging and established, with a background in two-dimensional and three-dimensional media and an interest in public art. Prior public art experience was not a requirement.

CTA received 166 responses.



# Artist Selection Process

In reviewing and evaluating the responses to this *Call for Artists*, CTA considered the following factors, which are listed in order of importance beginning with most important:

- Artistic merit as evidenced in submitted digital images
- Written statement of interest
- Professional recognition as evidenced by awards, honors and exhibition records
- Qualifications as evidenced by resume



# Artist Selection Process

A review committee reviewed the responses to the *Call for Artists* for completeness and minimum qualification and eliminated non-viable responses.

A review committee evaluated the remaining responses, determined a relative ranking of candidates based on an all-inclusive evaluation and compiled a short list of candidates for the project.

From the short list of candidates, a selection committee identified finalists for the station locations. Finalists were invited to negotiations and subsequently entered into a contract with CTA for the artwork commission.



# Artist Selection Process

## Selected Artist Responsibilities:

The artists or artist-teams awarded a contract will be responsible to collaborate with CTA to design, fabricate and deliver an original work of art of durable materials and that requires minimal maintenance.

Among other requirements of the contract, the artist will be required to meet the project timeline and budget.





# Commissions

The five art commissions are for design, fabrication and delivery. The budget for each art commission is \$150,000. This is inclusive of:

- Design
- Engineering (if applicable)
- Materials
- Fabrication
- Delivery of artwork
- Artist's fee (approximately 15-20% of the project budget)

# Timeline

Steps	Estimated Timing
'Meet the Artists' community meetings	June 6-7, 2023
Artist/artist teams develop artwork concepts and designs	Summer 2023 – Spring 2024
Approval of artwork, fabrication and delivery of artwork in collaboration with CTA	Spring 2024 – 2025
Art installation and station opening	2025





# RPM Artists

William Conger

Alice Hargrave

David Lozano

Mayumi Lake

Tom Torluemke

Bryn Mawr

Bryn Mawr/Hollywood

Berwyn

Argyle

Lawrence

**WILLIAM CONGER**

**Bryn Mawr**







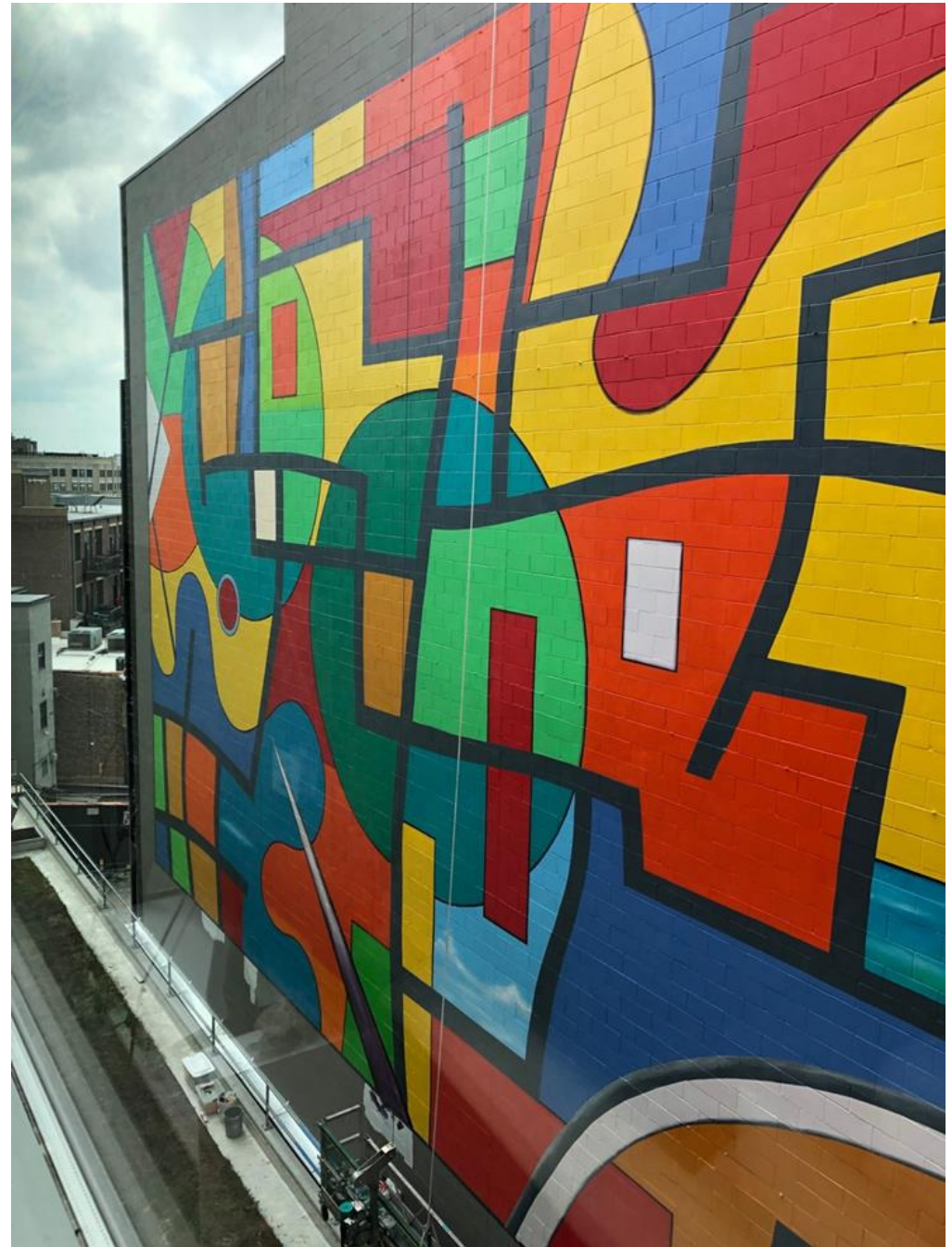


WILLIAM CONGER

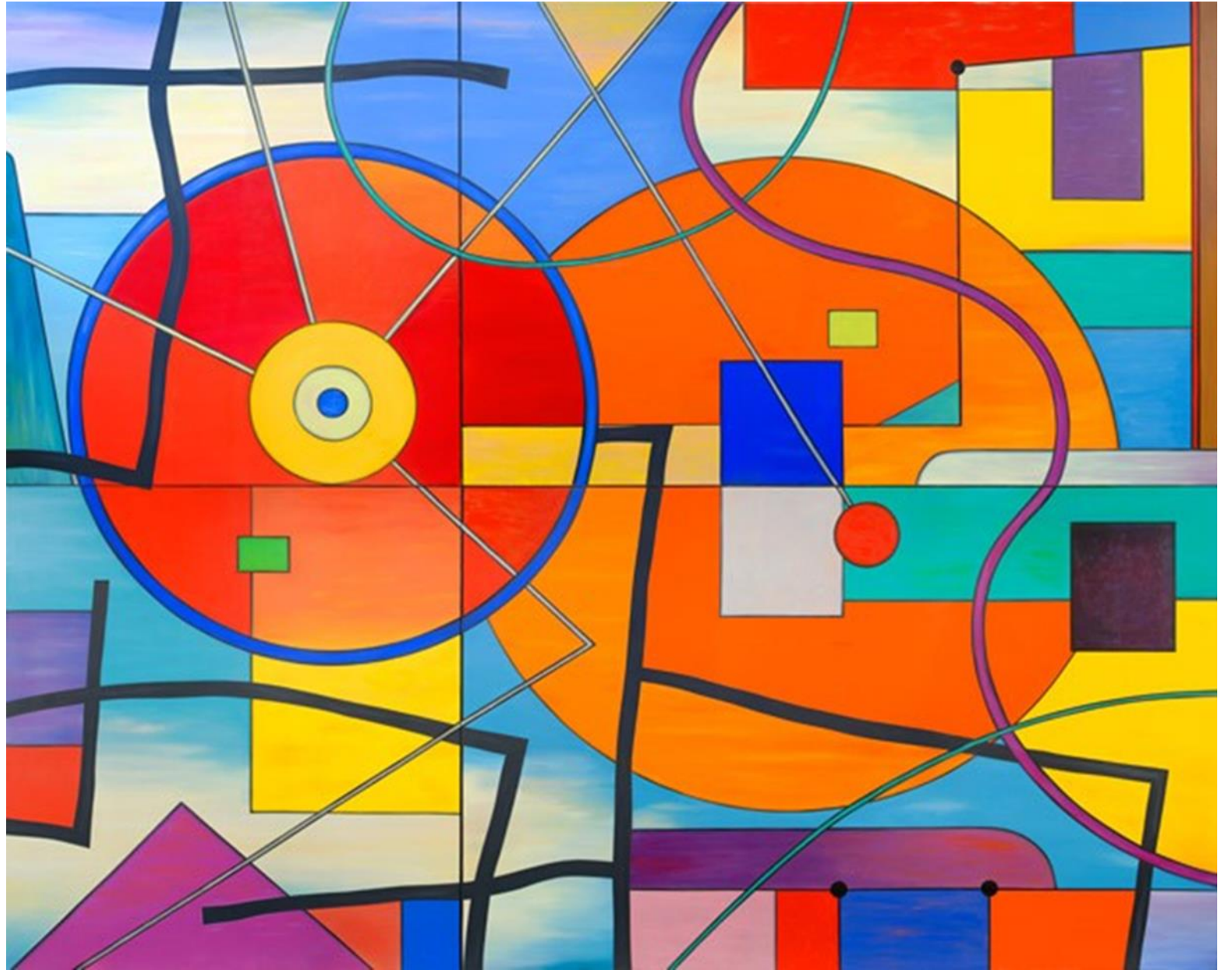
Bryn Mawr

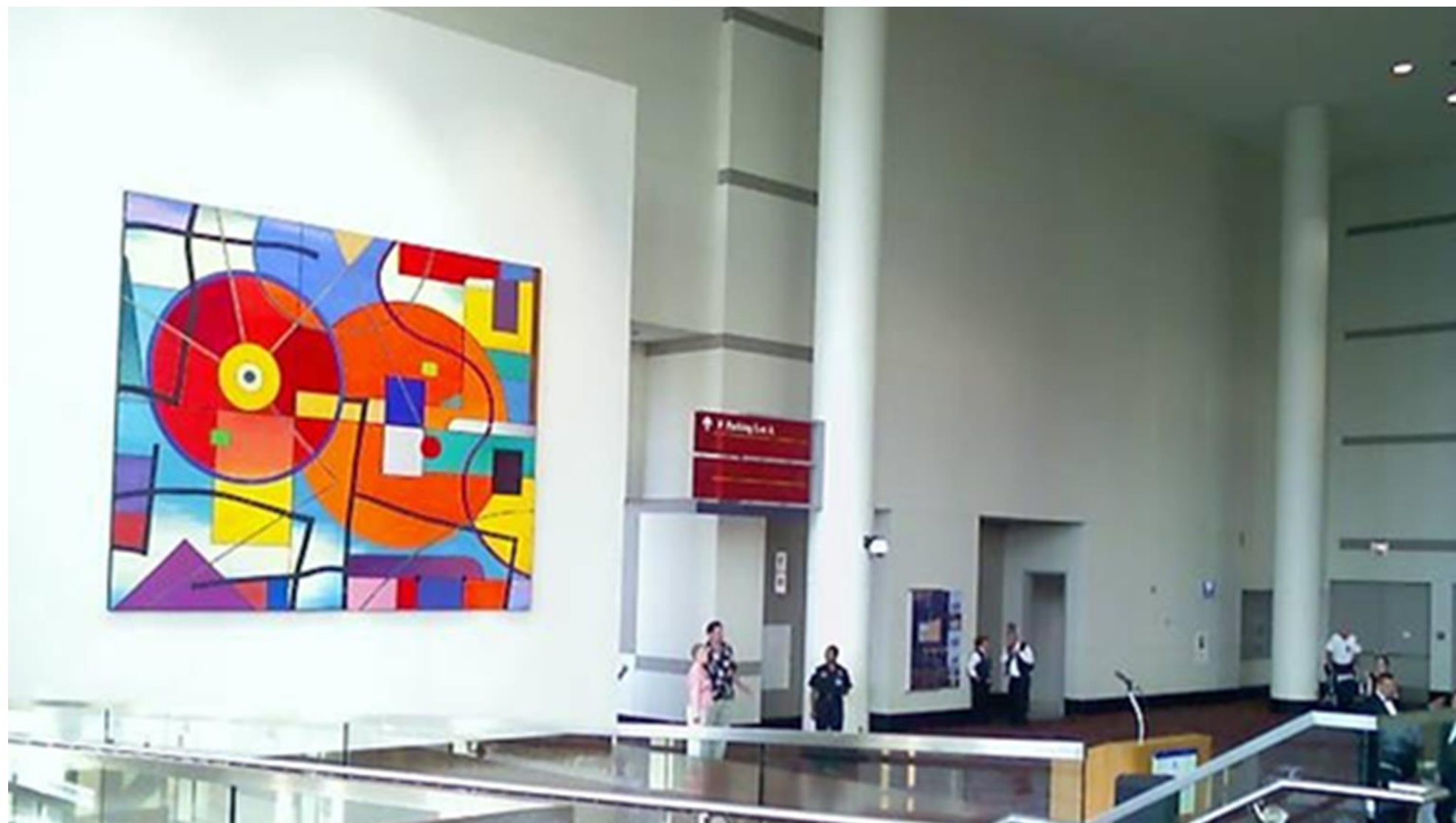












WILLIAM CONGER

Bryn Mawr

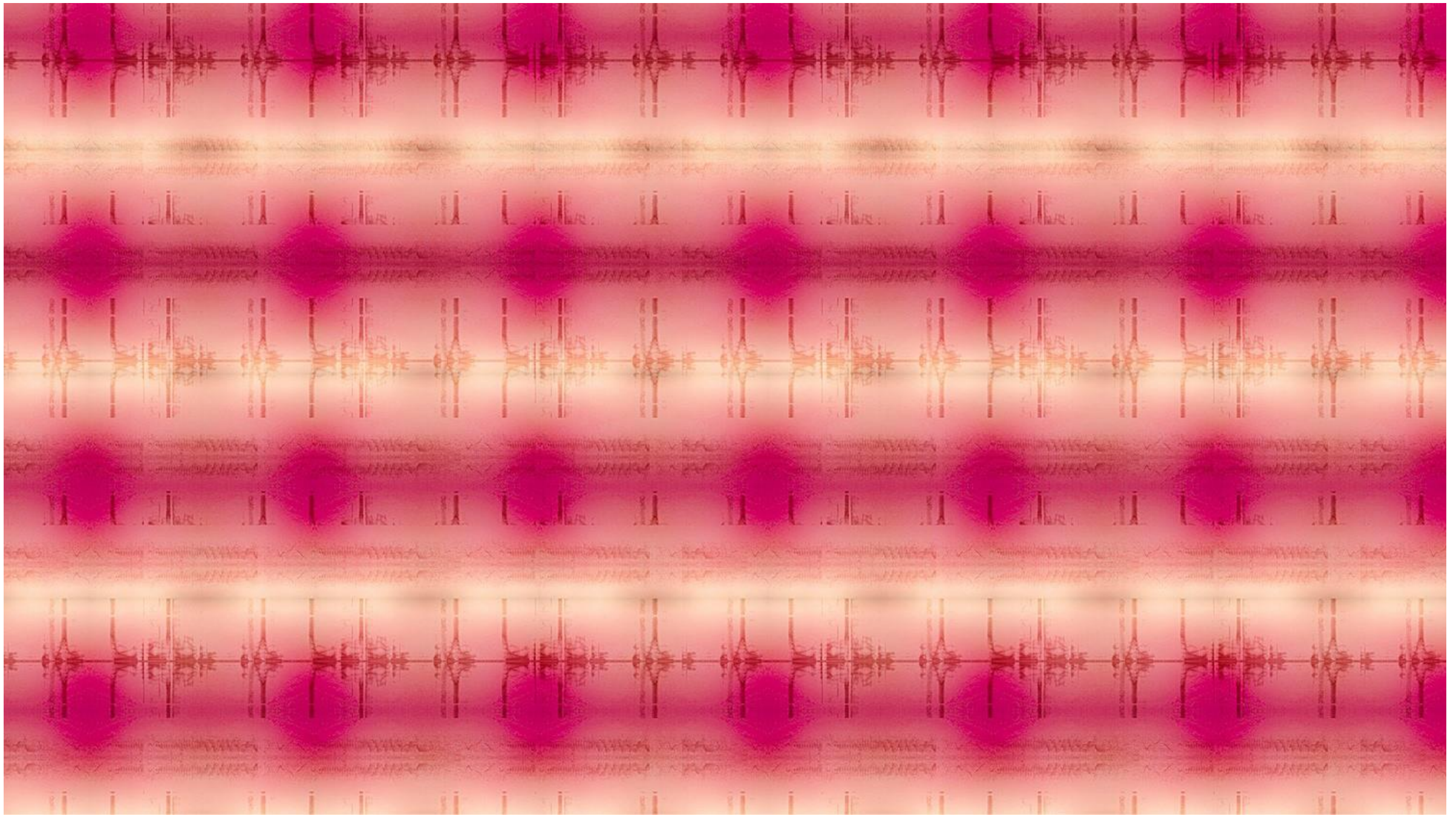


ALICE HARGRAVE

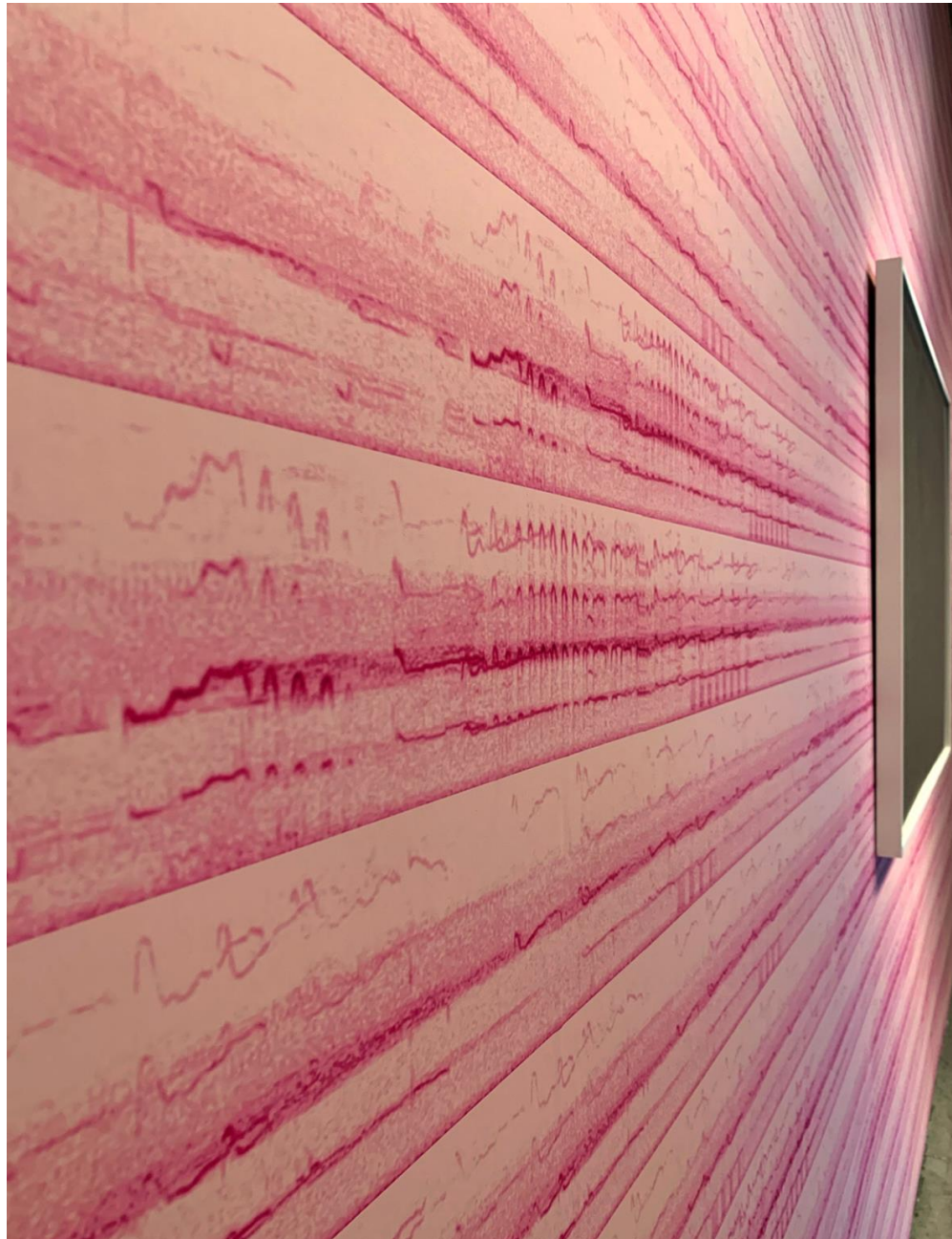
Bryn Mawr/Hollywood  
(station auxiliary entrance)



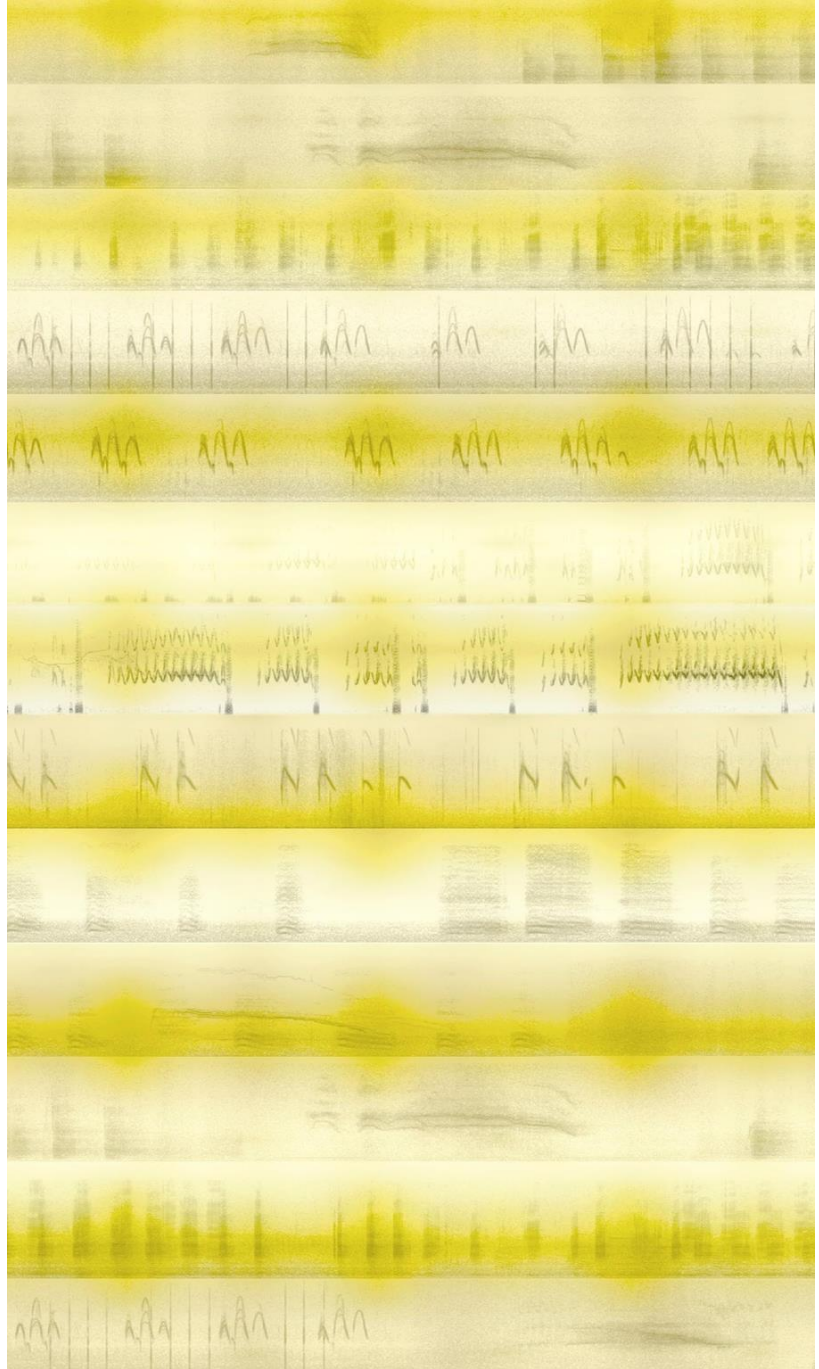
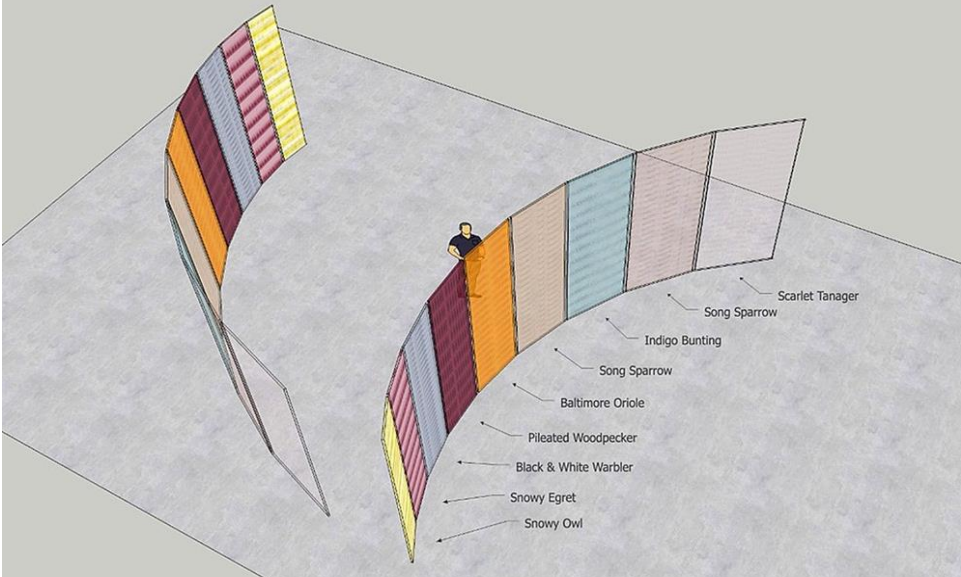
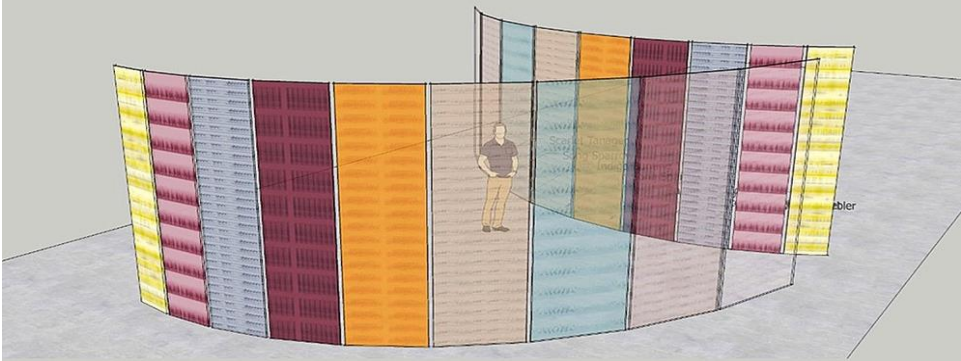




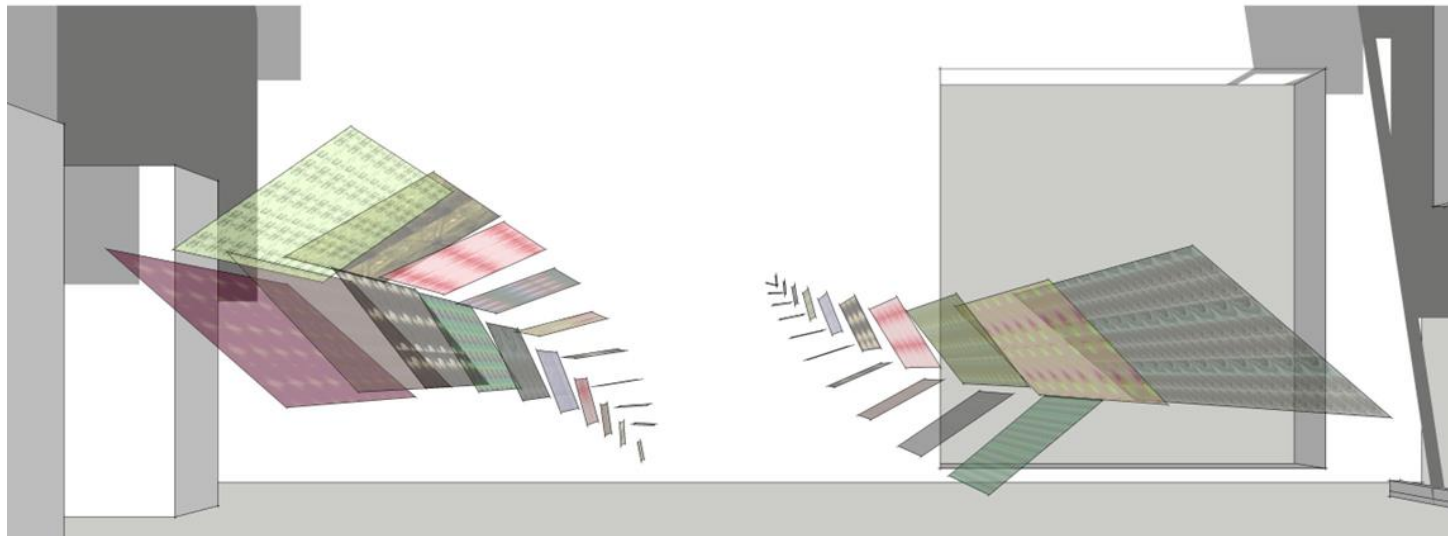
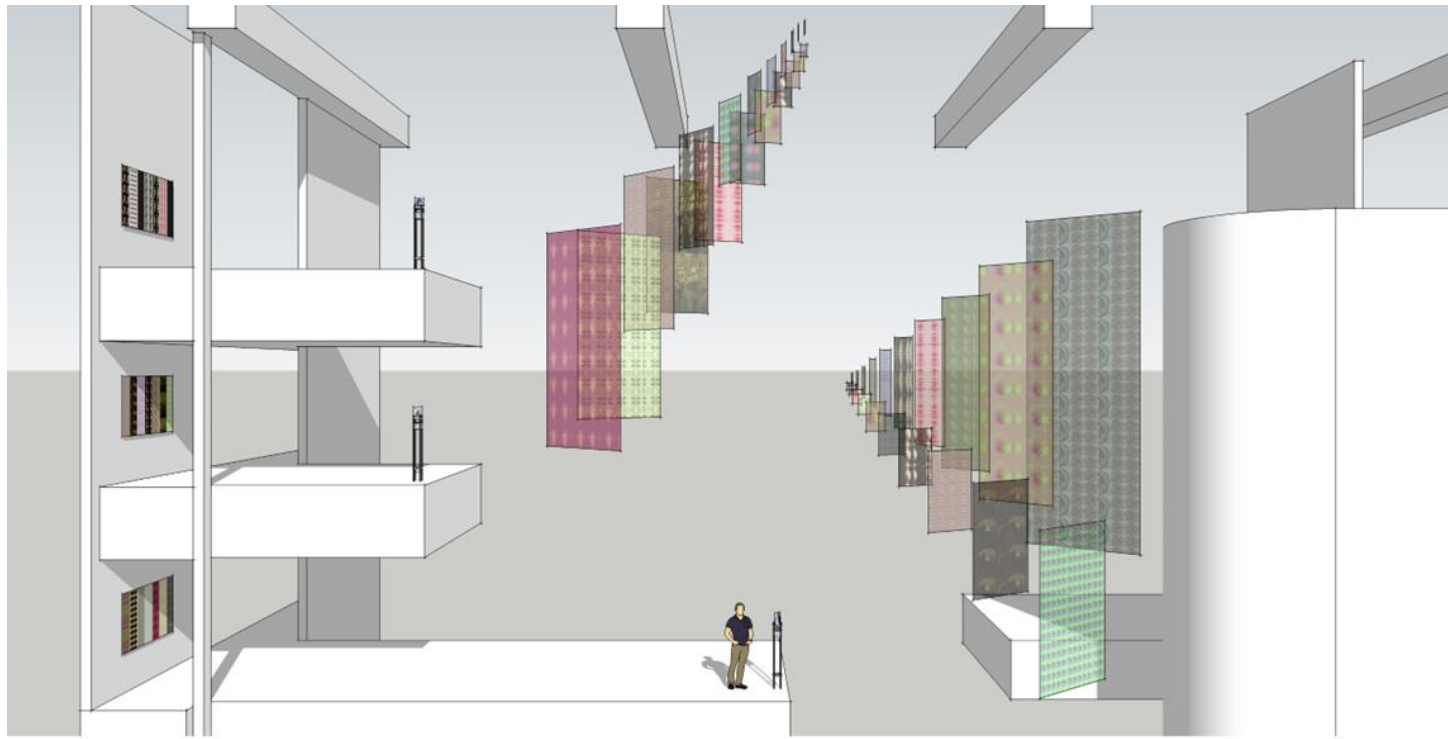




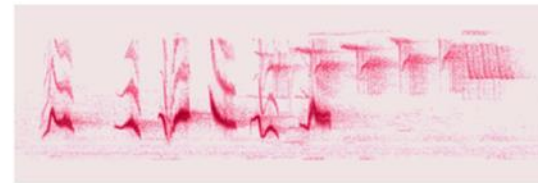
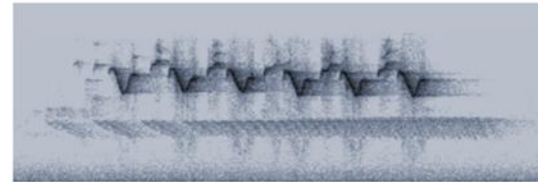
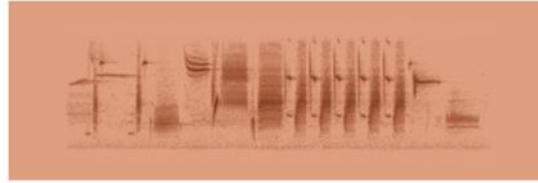
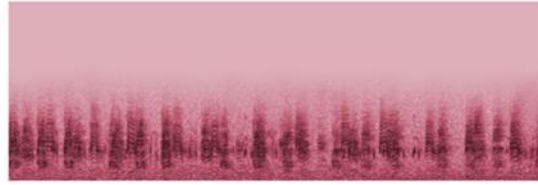














# Community Engagement

## Question & Answer

- Highlights of the history of your community?
- Special features of your community?
- Suggestions of themes for the artwork?

# Staying Informed

Red & Purple Line Service Updates: [transitchicago.com/updates](https://transitchicago.com/updates)

Website: [transitchicago.com/rpm](https://transitchicago.com/rpm)

General Information: [rpm@transitchicago.com](mailto:rpm@transitchicago.com)

Construction Alerts & Virtual Office Hours: [transitchicago.com/rpmalerts](https://transitchicago.com/rpmalerts)

Email us: [rpm@transitchicago.com](mailto:rpm@transitchicago.com)

Follow us @CTARPM on Facebook, Instagram and Twitter

Call us: 331-303-2499 for a call back or CTA Customer Service: 888-YOUR-CTA

For more information about CTA and the CTA's public art collection visit: [www.transitchicago.com/art](https://www.transitchicago.com/art)

