

Construction Project Briefing

November 19, 2014



Today's Presentation

- **Traction Power**
 - ✓ **Farwell/Armitage/Hill Substations**
 - ✓ **Kimball/Princeton/State Substations**
- **O'Hare Blue Line Station Improvements (Damen, Western, California)**
- **95th Street Terminal Improvement Program**



Project Title: Traction Power Systems Upgrades and Improvements Farwell/Armitage/Hill Substations

Justification of Need:	Substation equipment is obsolete and has exceeded its current lifespan
Priority of Project:	High
Total Project Budget:	\$56,918,563.00
Construction Contract Value:	\$46,684,000.00
Earned to Date:	70%
Percent Change Orders to Construction Contract:	1%
Percent Time Used to Date:	95% (as of October)
Funding Source:	State Capital Program
Estimated Start Date/Estimated Length of Project:	NTP issued August 30, 2012; substantial completion 833 days after NTP
Designer of Record:	Laramore, Douglass and Popham (LDP)
Construction Manager/General Contractor:	STV (CM), F.H. Paschen (GC)
Project Manager:	Barney Gray (GM); Premal Vora (PM)

Detailed Overview of Scope:

Construct Three (3) New Traction Power Substations namely, Farwell, Armitage, Hill

Modify Orleans Switch Room
 Modify Weed Switch Room
 Modify Sedgwick Substation



Project Title: Traction Power Systems Upgrades and Improvements Farwell/Armitage/Hill Substations

Impact on Customers:	Nine single tracks, and six reroutes. Street and lane closures around worksites, curtailed access to resident garages (at Armitage).
Benefit to System:	Additional traction power capacity reduced traction power related train defects, improved reliability for revenue service, and improved safety.
Benefit to Community:	Improved safety.
Impact on Accessibility:	None.
Estimated # of Jobs Created:	89
Customer Communication Need:	Construction activity notices will be needed to alert businesses and residents to weekend, night work and power outages.

Comparable Projects:

- NA



Project Title: Traction Power Systems Upgrades and Improvements Farwell/Armitage/Hill Substations

Construction Progress

Phase	Description	Status
Construction	<ul style="list-style-type: none"><li data-bbox="324 297 1532 368">▪ Farwell – Substation was turned over to CTA on September 9, 2014. Substation began powering system on September 12, 2014. Punchlist work is ongoing.<li data-bbox="324 411 1532 482">▪ Armitage – DC equipment delivered to site, and placed in building. AC building roof slab was installed. Wall installation progresses in the Courtyard area.<li data-bbox="324 525 1532 596">▪ Hill – Substation was turned over to CTA on September 30, 2014. Punchlist work is ongoing.	Ongoing

Delay Explanation:
<ul style="list-style-type: none"><li data-bbox="57 1011 1705 1082">• Unforeseen underground conditions and a high water table have been encountered within CTA Right of Way at Armitage Substation, creating a delay and requiring site dewatering prior to interior column excavation work.



Project Title: Traction Power Systems Upgrades and Improvements Farwell/Armitage/Hill Substations



Armitage Substation: DC Building

Project Title: Traction Power Systems Upgrades and Improvements Farwell/Armitage/Hill Substations



Armitage Substation: DC Building

Project Title: Traction Power Systems Upgrades and Improvements Kimball, Princeton, and State Substation Projects

Justification of Need:	Substation equipment is obsolete and has exceeded its current lifespan
Priority of Project:	High
Total Project Budget:	\$34,726,123.00
Construction Contract Value:	\$25,634,144.25
Earned to Date:	11%
% Change Orders to Construction Contract:	0%
Percent Time Used to Date:	24%
Funding Source:	Bonds
Estimated Start Date/Estimated Length of Project:	Design NTP - October 1 st , 2013 Start of Construction (240 days after NTP) – May 29 th , 2014 Substantial Completion (800 days after NTP) – December 10 th , 2015
Designer of Record:	Parsons Transportation
Construction Manager/General Contractor:	STV (CM), / Clark Construction
Project Manager:	Barney Gray (GM); Premal Vora (PM)

Detailed Overview of Scope:

Rehabilitation of existing buildings and building envelopes to a state of good repair at Kimball, Princeton and State. Replace existing AC/DC conversion equipment, getaway cables, enclosures, and switches with new equipment, cables, enclosures, and switches.

Perform an existing conditions survey of feeder cables and section tie switches within the Kimball Yard.

Enhance the negative return system on the ballasted portion of the Brown Line between Kimball Yard and the Western Avenue Incline.



Project Title: Traction Power Systems Upgrades and Improvements Kimball, Princeton, and State Substation Projects

Impact on Customers:	Three single tracks, and two reroutes. Street and lane closures around worksites, Brown Line Crossing impacts.
Benefit to System:	Improve traction power capacity reduced traction power related train defects, improved reliability for revenue service, and improved safety.
Benefit to Community:	Improved reliability and safety.
Impact on Accessibility:	None.
Estimated # of Jobs Created:	49
Customer Communication Need:	Construction activity notices will be needed to alert businesses and residents to weekend, night work and power outages.

Comparable Projects:

- NA



Project Title: Traction Power Systems Upgrades and Improvements Kimball, Princeton, and State Substation Projects

Construction Progress

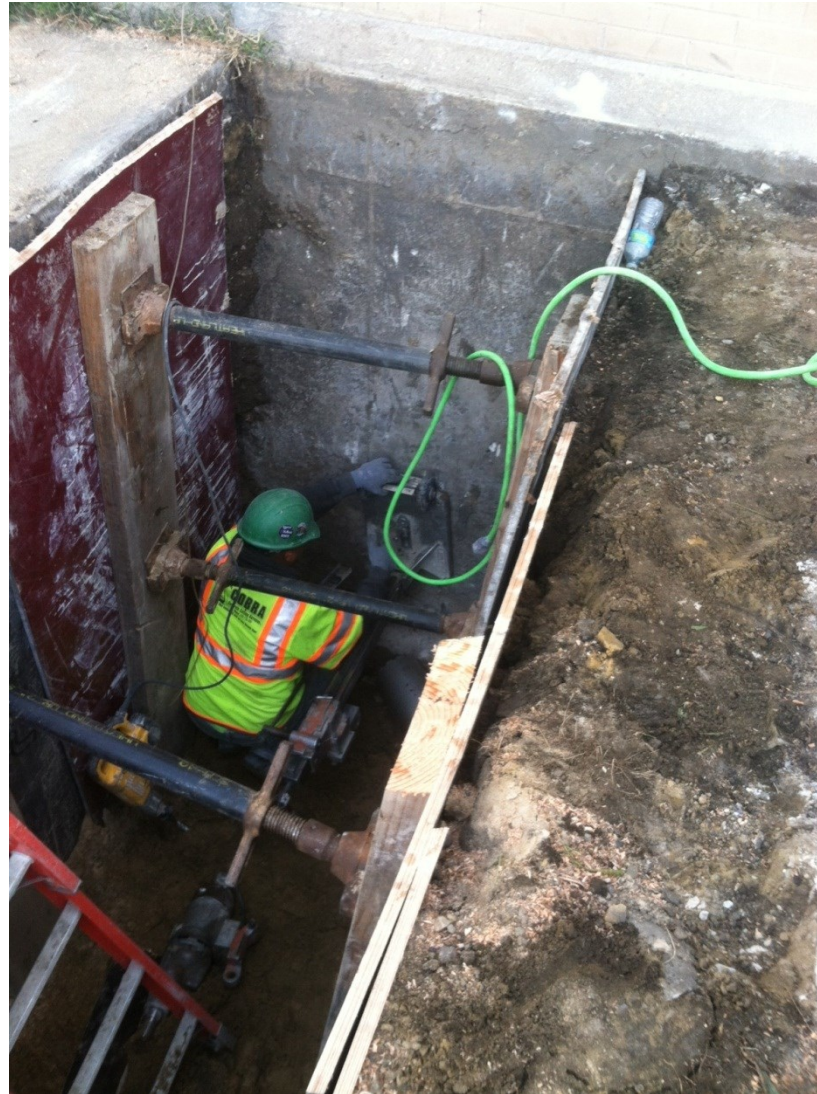
Phase	Description	Status
Construction	<ul style="list-style-type: none">▪ Kimball – City permits approved. Contractor mobilization ongoing.▪ Princeton -- Fabrication of traction power equipment ongoing. ComEd ductbank installation and coring in substation vault ongoing.▪ State – Masonry rehabilitation work ongoing, structural inspections of building corner steel performed.	Ongoing

Delay Explanation:

- The Design-Build Contractor did not complete the design by the expected milestone, delaying the start of construction-phase activities by approximately one month.
- The traction-power equipment being supplied for the project did not pass its required design-level tests at KEMA Labs. Rectifier redesign is in progress, with a re-test tentatively scheduled for early December.



Project Title: Traction Power Systems Upgrades and Improvements Kimball, Princeton, and State Substation Projects



ComEd work at Princeton Substation



Project Title: Traction Power Systems Upgrades and Improvements Kimball, Princeton, and State Substation Projects



Masonry Rehabilitation Work (State St. Substation)



Project Title: O’Hare Blue Line Station Improvements (Damen Western California)

Justification of Need:	The existing stations have undergone varying degrees of repair since they opened in 1895. The objective of this project is to bring the stations up to a state of good repair while retaining historic elements.
Priority of Project:	High
Total Project Budget:	\$33,000,000
Construction Contract Value:	\$26,613,238 (Design/Build)
Earned to Date:	27.7% thru September 2014
Percent Change Orders to Construction Contract:	4% (raising platforms)
Percent Time Used to Date:	83.6% thru November 19, 2014
Funding Source:	IDOT (Jump Start)
Estimated Start Date/Estimated Length of Project:	NTP Issued March 19, 2014; Substantial Completion January 6, 2015 (NTP + 293 Days)
Designer of Record:	Ross Barney Architects (for F.H. Paschen)
Construction Manager/General Contractor:	Parsons Brinckerhoff (CM), F.H. Paschen (DBC)
Project Manager:	John Titzer (GM); William Polacek (PM)

<p>Detailed Overview of Scope:</p> <ul style="list-style-type: none"> • California and Damen: Replace platform decking, station house roofing , interior flooring, structure painting, interior station house renovation, sidewalk/plaza paving, tuck point masonry, LED lighting, new signage, bike racks, CA Booth, additional fare turnstiles and new art work. • Western: New entrance canopy, paint stairs, LED lighting, bike racks and art work. • Damen Tower: Replace roofing, doors, windows, tuck point masonry and install new station electrical service.



Project Title: O'Hare Blue Line Station Improvements (Damen Western California)

Impact on Customers:	<p>California Station will be closed for a period of 42 days beginning in 3rd quarter 2014.</p> <p>Damen Station will be closed for a period of 63 days in the 4th quarter of 2014. Western will remain open during construction.</p> <p>Only one station will be closed at a time to minimize customer impacts.</p>
Benefit to System:	<p>Reduced maintenance costs; New infrastructure, improved lighting and customer interfacing, including train tracker system</p>
Benefit to Community:	<p>Modern, well lit station with additional security cameras that will improve safety and security.</p>
Impact on Accessibility:	<p>None.</p>
Estimated # of Jobs Created:	<p>70</p>
Customer Communication Need:	<p>Construction activity notices will be needed to alert businesses and residents regarding station closures and construction impacts (noise, dust, street/alley impacts)</p>

<p>Comparable Projects:</p>	
<ul style="list-style-type: none"> • North Main Line Seven Station Renovations • Harrison Station Renewal Project 	



Project Title: O'Hare Blue Line Station Improvements (Damen Western California)

Construction Progress

Phase	Description	Status
Design Design	<ul style="list-style-type: none"> ▪ Milestone A – RFP Validation and presentation boards ▪ Milestone B – 90% Design 	Complete Complete
Pre-Construction	<ul style="list-style-type: none"> ▪ Contractor Soliciting and awarding bids for various trades. 	On-Going
Construction	<ul style="list-style-type: none"> ▪ California Station closed for 42 days on September 4th. GC is on schedule to reopen station on October 16th. 	Complete
Construction	<ul style="list-style-type: none"> ▪ Close Damen Station 63 days for construction work (10/20-12/22/14) 	Planned

Delay Explanation:
<ul style="list-style-type: none"> • N/A



Project Title: O'Hare Blue Line Station Improvements (Damen Western California)



Project Title: O'Hare Blue Line Station Improvements (Damen Western California)



Project Title: O'Hare Blue Line Station Improvements (Damen Western California)



Project Title: O'Hare Blue Line Station Improvements (Damen Western California)



Project Title: 95th Terminal Improvement Program

Justification of Need:	The Terminal is functionally obsolete and does not allow for optimal bus operations and pedestrian flow.
Priority of Project:	High
Total Project Budget:	\$240 M
Construction Contract Value:	Advance Package 1 (AP1): \$2,491,291 Advance Package 2 (AP2): \$23,058,838
Earned to Date Through End of October:	Advance Package 1: 19%
Percent Change Orders to Construction Contract:	0
Percent Time Used Through End of October:	Advance Package 1: 82% Advance Package 2: 33%
Funding Source:	Federal, State, Bond
Estimated Start Date/Estimated Length of Project:	Advance Package 1: June 6, 2014 / 180 days Advance Package 2: July 24, 2014 / 300 days
Designer of Record:	Parsons Brinckerhoff
Construction Manager/General Contractor:	Walsh/II In One JV
Owners Representative:	Jacobs/SQN JV
Project Manager:	Grace Ohs (PM), Brittany Dyra (GM)

Detailed Overview of Scope:

The 95th Terminal Improvement Project will create new South and North Terminal Buildings at 95th on the Dan Ryan Red Line. The new terminal buildings will create a functional and efficient intermodal facility to enhance bus service and improve pedestrian safety. Scope includes the replacement and expansion of the terminal and platform and the addition of bus and pedestrian bridges. New administrative office space will be built and new bus bays will be provided around the terminal buildings.



Project Title: 95th Terminal Improvement Program

Impact on Customers:	Track closures and weekend station closures during construction. Temporary relocation of certain bus operations to nearby streets during construction phasing.
Benefit to System:	Improved customer circulation and safety by relieving congestion. Improved bus service and improved pedestrian safety.
Benefit to Community:	Improved pedestrian safety with new pedestrian bridge over 95 th Street, longer train platform extending to the new South Terminal Building.
Impact on Accessibility:	New South and North Terminal Buildings with improved accessible routes to buses.
Estimated # of Jobs Created:	3,120 (Direct, Indirect and Induced), 652 (Direct)
Customer Communication Need:	Requires periodic track closures and possible station closures with bus shuttle service. Bus Operations may be relocated to adjacent streets during certain phases of construction.

Comparable Projects:
<ul style="list-style-type: none"> Wilson Station



Project Title: 95th Terminal Improvement Program

Construction Progress

Phase	Description	Status
Design	<ul style="list-style-type: none"> ▪ 85% Design Submittal – 10/10/14 ▪ 90% Design 	Complete Ongoing
Pre-Construction Services	<ul style="list-style-type: none"> ▪ Walsh/II in One JV participates in Design Meetings and provides constructability reviews, schedules, and estimates for each Design Phase. 	Ongoing
Construction Advance Package 1: Dan Ryan Tower Lights and Sign Relocation	<ul style="list-style-type: none"> ▪ Wood pole installation for temp electrical/fiber optic cable work is complete ▪ Hanging of temp electrical/fiber optical cable is in progress ▪ Overhead highway sign relocations are in progress ▪ Foundation work for high mast light tower relocations is in progress 	Ongoing
Advance Package 2: Dan Ryan Retaining Walls	<ul style="list-style-type: none"> ▪ Project submittals and construction process plans submitted and under review ▪ Utility locates are complete ▪ Clearing of west embankment wall area is complete ▪ Initial foundation work for west retaining wall is in progress ▪ Utility coordination for east retaining wall is in progress 	Ongoing

Delay Explanation:

NA



Project Title: 95th Terminal Improvement Program



11/01/2014 08:18



Project Title: 95th Terminal Improvement Program



Project Title: 95th Terminal Improvement Program

