

Welcome aboard

We provide public transit services by subway/elevated rapid transit train service (the 'L' system) and bus service throughout Chicago and many neighboring communities.

This map and guide focuses on the Downtown Chicago area. It generally shows routes that run all day and/or in seasons where the city sees its most visitors. Many hotels and major attractions are highlighted.

For a complete system map that includes all year-round services, including rush-hour and commuter services, see our full Bus & 'L' train map.

All maps and service information are also available on our website at transitchicago.com.

Information in other languages

¡Le damos la bienvenida! Si desea información en su idioma sobre cómo utilizar el transporte público, visite nuestro sitio web

Witaj! Aby dowiedzieć się, jak korzystać z transportu publicznego w swoim języku, odwiedź naszą stronę internetową

欢迎您！请访问我们的网站，以您的母语查阅公交系统的搭乘信息

Maligayang pagdating! Bisitahin ang aming website para sa impormasyon sa pagsakay sa pampublikong sasakyan

Willkommen! Für Informationen zum öffentlichen Nahverkehr in Ihrer Sprache besuchen Sie bitte unsere Webseite

ようこそ！公共交通機関のご乗車方法の案内を日本語でご覧になるには、ウェブサイトをご覧ください

ยินดีต้อนรับ! โปรดเยี่ยมชมเว็บไซต์ของเราสำหรับข้อมูลการใช้ระบบขนส่งสาธารณะเป็นภาษาของคุณ

transitchicago.com/languages

Detailed transit information and customer service

All CTA buses are accessible:

CTA buses "kneel" (lower) on request and have ramps at the front doors; anyone can ask for the ramp or bus to kneel.

Website transitchicago.com

Deaf or hard-of-hearing call 711 relay

Travel Information 312-836-7000

Customer service 888-YOUR-CTA

Riding the 'L' (trains)

The 'L' system consists of eight train lines that cross the city with fast, frequent daily service. The system is centered on downtown and has more than 140 stations serving many neighborhoods across the city and both major airports, directly.

All services run daily (except Purple Line Express service between Howard and Downtown Chicago), generally early morning through late evening. Free transfer is available between all 'L' lines, marked with linked dots on maps:

At all stations, staff are on duty to help you. Customer Assistance/Help Point call buttons are located near turnstiles and on platforms.

Maps are posted in each railcar and station to help you plan your trip; timetables are also posted in stations. Stations have signs at entrances to tell you what lines are available and to guide you to your train.



Trains are marked on the front and sides with their destination, and train and transfer information is announced on board.



Where to find 'L' lines that run downtown

Some lines run via elevated tracks, some through subways:

- Red Line State Street Subway
- Blue Line Dearborn Street Subway
- Brown Line Loop elevated
- Green Line Loop elevated (along Wabash & Lake)
- Orange Line Loop elevated
- Purple Line Exp Loop elevated (see schedule)
- Pink Line Loop elevated

Riding the bus

CTA buses stop at marked stops or stops with shelters throughout the city with blue and white bus stop signs.

Signs list the routes that stop there and a general description of where each route goes and the general times when buses run for each route listed on the sign.

When a bus approaches, be sure to check the sign on the front of the bus to verify it's the route you want and it's going to the correct destination (drivers can also help answer questions about whether they will reach your stop). To board, flag the bus down and pay as you enter in the front.

Paying fare

Fare on CTA buses and at 'L' stations is paid using our fare system, called Ventra. You can pay for yourself and up to 6 other people with any contactless credit card, cards loaded into Pay apps or a Ventra Card. Disposable Ventra Tickets are also available from vending machines in stations and select off-CTA locations like major regional rail (Metra, etc.) terminals. See Quick Fares for basic fare info.

Don't have a farecard or ticket? Contactless payments accepted at the fare reader—use a bankcard or Pay app for regular per-ride fares!

Accessibility

All CTA buses are accessible to people with disabilities, and more than 100 (>70%) of 'L' stations are accessible and marked as such on route and system maps. More at: transitchicago.com/accessibility

Get live arrivals with our trackers

Using our Bus Tracker or Train Tracker can help take the wait out of your trip and get the most of your time in the city. Information is available on our mobile-friendly website, in transit apps (including our Ventra app), on request by text message and on digital signs at many stations and stops:



'L' service overview

Line/route	Weekdays	Saturday	Sunday/hol.
Red Line Howard—Dan Ryan via downtown subway	All times	All times	All times
Blue Line O'Hare —Forest Park via downtown subway	All times	All times	All times
Brown Line Kimball—downtown via Loop elevated	early morning- late evening	early morning- late evening	early morning- late evening
Green Line Harlem—Ashland/63rd— Cottage Grove via downtown	early morning- late evening	early morning- late evening	early morning- late evening
Orange Line Midway —downtown via Loop elevated	early morning- late evening	early morning- late evening	early morning- late evening
Purple Line Linden—Howard local shuttle service	early morning- late evening	early morning- late evening	early/mid morning- late evening
Purple Line Express Linden—downtown express, via Loop elevated	Weekday rush periods, only	<i>At all other times, change at Howard between Purple Line shuttle and Red Line services.</i>	
Pink Line 54th/Cermak—downtown, via Loop elevated	early morning- late evening	early morning- late evening	early morning- late evening
Yellow Line Dempster-Skokie— Howard shuttle service	early morning- mid/late evening	early morning- mid/late evening	early morning- mid/late evening

Use trip planners or visit transitchicago.com/schedules for detailed schedule information, alerts and other service details.

Quick fares

Fare type	Full	Reduced
'L' train fare	\$2.50	\$1.25
'L' train fare from O'Hare	5.00	1.25
Bus fare*	2.25	1.10
Transfers <small>up to 2 add'l rides on CTA within 2 hours of a new fare</small>	free	free
1-Day Pass (24 hrs)	5	
3-Day Pass (72 hrs)	15	

- Download the Ventra app to manage your Ventra Card's balance and passes. You can even add a Ventra Card to your device!
- Most above fares and passes are available with Ventra Cards. Regular per-ride fares also valid when using contactless .
- Vending machines in every CTA 'L' station sell new Ventra Cards and also limited-use/disposable tickets (Single-trip, 1-Day, etc.).
- *If using cash/coin directly on bus, full fare is \$2.50 or \$1.10 reduced—exact change required, transfers not available.
- Visit transitchicago.com/fares for full details on CTA fares, special fare programs (reduced, student, etc.) and more.

From the Loop

Attraction	Take bus or train:
Art Institute, Chicago Cultural Ctr. Chinatown	Short walk from most buses and all rail lines
DuSable Museum	Red Line train (toward 95th/Dan Ryan) in the State Street Subway south to Cermak-Chinatown or bus 62 South on State
Huntington Bank Pavilion at Northerly Island Park	4 south on Michigan (starts at Randolph)
Garfield Park Conservatory	146 south on State or 130 (Memorial Day weekend thru Labor Day) east on Jackson
Guaranteed Rate Field (White Sox)	Green Line train (toward Harlem) on the Loop 'L' west to Conservatory-Central Park Drive
360 Chicago (formerly Hancock Observatory)	Red Line train (toward 95th/Dan Ryan) in the State Street subway south to Sox-35th or Green Line train (toward Cottage Grove or Ashland/63rd) south to 35th-Bronzeville-IIT
Lincoln Park Zoo	10, 146, or 147 north on State; 151 north John on Dearborn; north on Michigan
McCormick Place Wintrust Arena (Chicago Sky)	151 north on Dearborn or 156 north on LaSalle
Museum Campus**	3 south on Michigan or Green Line (toward Cottage Grove or Ashland/63rd) south to Cermak-McCormick Place
Museum of Science & Industry	146 south on State, or 130 (Memorial Day weekend thru Labor Day) east on Jackson
Navy Pier	6 or 10 south on State or 28 (weekday rush hours) east on Jackson. Check schedules online for 10 and 28 hours
North Michigan Avenue	29 north on State or 124 east on Washington
River North & Old Town areas	10, 146, or 147 north on State, 151 north on Dearborn, or 3 north on Michigan
Soldier Field (Bears, Chicago Fire)	22 or 36 north on Dearborn
Union Station	146 south on State
United Center (Bulls, Blackhawks)	7, 126, or 151 west on Adams
Willis (Sears) Tower	19 or 20 west on Madison
Wrigley Field (Cubs)	7, 126 or 151 west on Adams
	Red Line train (toward Howard) in the State Street subway north to Addison

From North Michigan Avenue

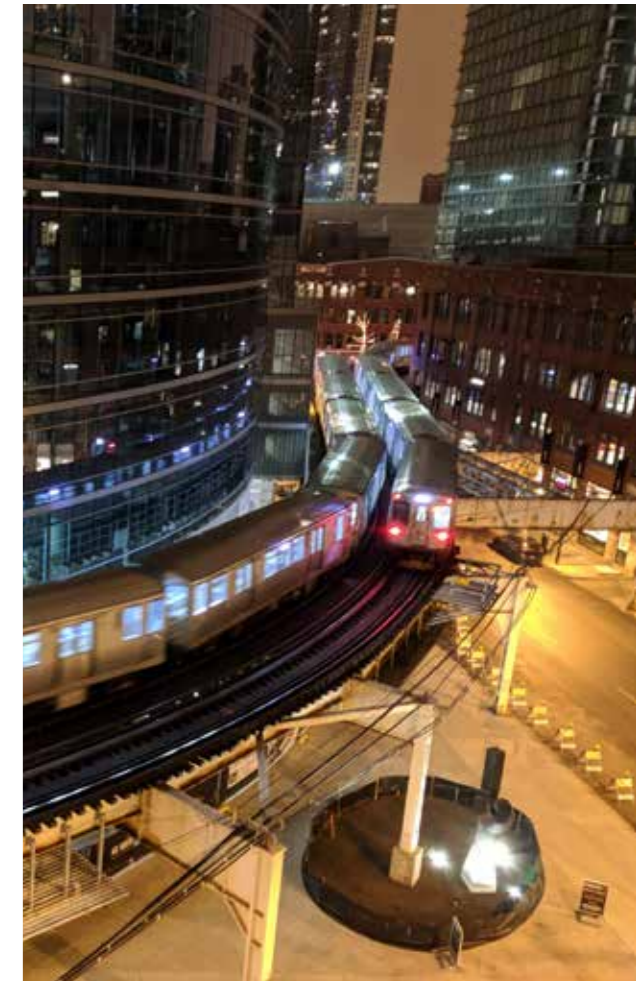
Attraction	Take bus or train:
Art Institute, Chicago Cultural Ctr.	3* or 147 south on Michigan
Guaranteed Rate Field (White Sox)	Red Line train (toward 95th/Dan Ryan) in the State Street subway south to Sox-35th
Lincoln Park Zoo	Red Line train (toward Howard) in the State Street subway north to Addison
McCormick Place Wintrust Arena (Chicago Sky)	151 north on Michigan
Museum Campus**	3* south on Michigan
Museum of Science & Industry	146 south on Michigan
Navy Pier	10 south on Michigan. Check schedules online for 10 and 28 hours. Otherwise, 6 west on Wacker at Michigan.
Willis (Sears) Tower/Union Station	66 east on Chicago or 29, 65 east on Illinois
State Street Shopping	151 south on Michigan
Soldier Field (Bears, Chicago Fire)	10, 146, 151 or 157 south on Michigan
Wrigley Field (Cubs)	146 south on Michigan
	Red Line train (toward Howard) in the State Street subway north to Addison

* Starts at Superior

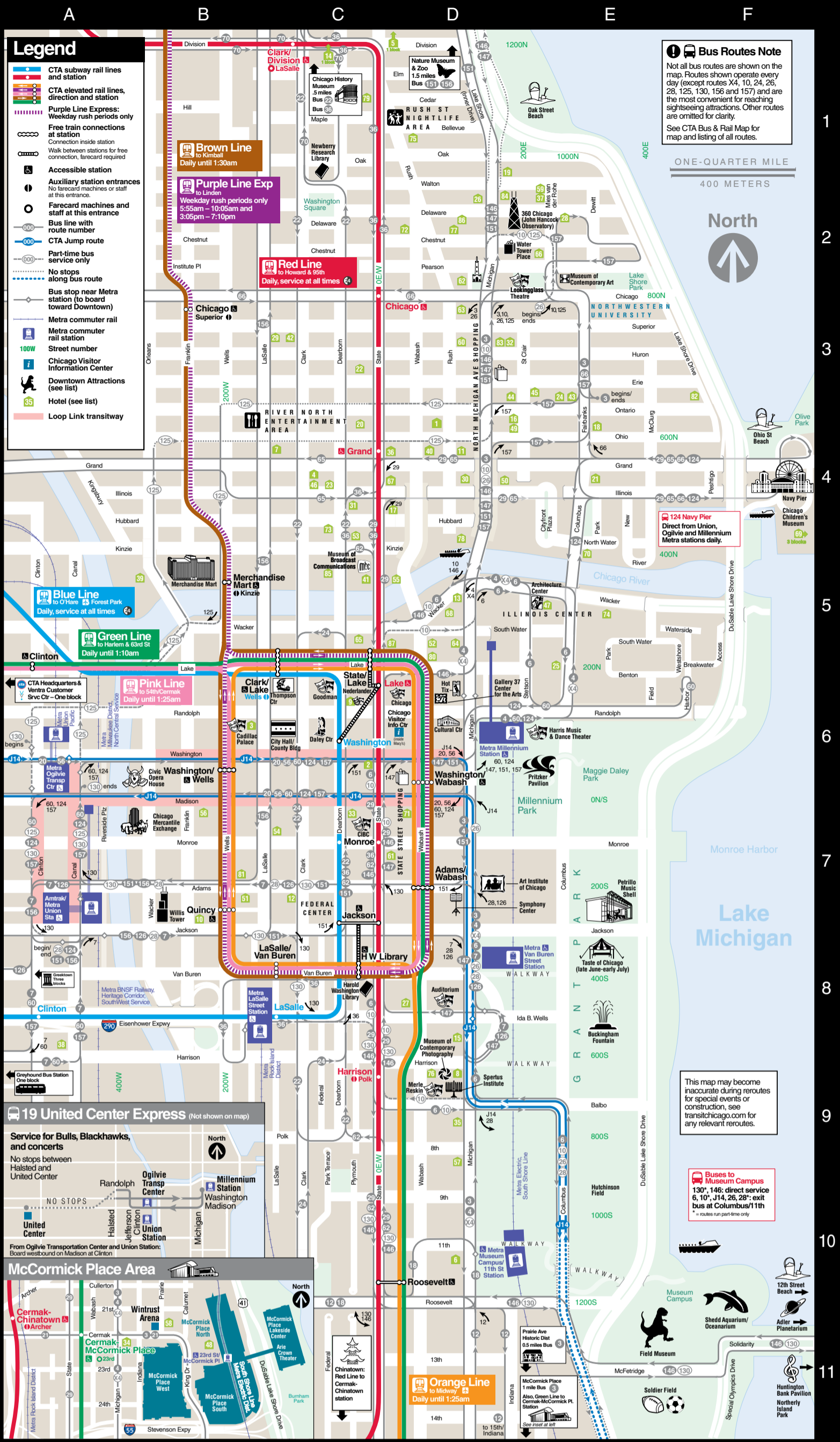
** Adler Planetarium/Field Museum/Shedd Aquarium/Soldier Field

Downtown sightseeing by transit

July 2023



Downtown map



Downtown attractions

Visitor Info. Center: Chicago Visitor Information Center inside Macy's on State Street (State/Randolph) Hours: Monday - Saturday, 10am to 6pm; Sunday, 11am to 6pm (closed Easter and Christmas Day).

- | | | | | | |
|---|---|--|---|--|---|
| F-11 Adler Planetarium | C-6 City Hall/County Bldg. | C-8 Harold Washington Library Center | F-4 Navy Pier:
- Skyline Stage
- Chicago Shakespeare Theatre
- Chicago Children's Museum | C-3 River North Restaurants & Nightlife | E-8 Taste of Chicago (late June-early July) |
| D-7 Art Institute of Chicago | C-6 Daley Center & Picasso | D-5 Hot Tix Booth | C-1 Newberry Library | B-7 Willis (Sears) Tower Skydeck | Theatres (Live):
D-8 Auditorium
B-6 Cadillac Palace
C-6 Chicago
F-4 Chicago Shakespeare (Navy Pier)
C-6 Goodman
Harris Music and Dance
Lookingglass
Nederlander
Merle Reskin |
| E-8 Buckingham Fountain | C-11 Chinatown | E-11 McCormick Place | D-2 North Michigan Avenue Shopping | F-10 Shedd Aquarium | C-6 Chicago Shakespeare (Navy Pier)
C-6 Goodman
Harris Music and Dance
Lookingglass
Nederlander
Merle Reskin |
| F-11 Huntington Bank Pavilion
Northy Island Park | E-11 Field Museum | B-5 Merchandise Mart | Beaches:
D-1 Oak Street Beach
F-3 Ohio Street Beach
F-10 12th Street Beach | D-5, F-4, F-10 Sightseeing Boats | E-6
D-2
D-9
C-7 |
| D-5 Chicago Architecture Center Tours | D-5 Gallery 37 | C-4 Museum of Broadcast Communication | D-2 Old Water Tower & Pumping Station | E-11 Soldier Field | E-11 Prairie Avenue Historic District:
- Clarke House Museum
- Glessner House Museum
- Women's Park and Gardens |
| D-6 Chicago Cultural Center | A-8 Greektown | E-2 Museum of Contemporary Art | D-9 Spertus Institute | C-6, C-7 State Street Shopping
- Chicago Visitor Info. Center (inside Macy's) | |
| A-6 Civic Opera House | C-6 James R. Thompson (State of Illinois) Center | D-1 Nature Museum and Zoo | E-7 Petrillo Music Shell | D-7 Symphony Center | |
| A-7 Chicago Mercantile Exchange Tours | D-2 360 Chicago (Formerly John Hancock Observatory) | D-9 Museum of Contemporary Photography (located inside Columbia College) | D-6 Pritzker Pavilion
- Grant Park Music Festival | | |

Alphabetical list of downtown hotels

- | | | | |
|--|--|--|---|
| 1 21C Museum Hotel Chicago, D-4 | 23 Fairfield Inn & Suites (Illinois St.), C-4 | 45 Hyatt Centric Chicago Mag Mile, D-3 | 67 The Royal Sonesta (River North), C-4 |
| 2 The Alise, C-6 | 24 Fairfield Inn & Suites (Ontario St.), E-3 | 46 Hyatt Place (River North), C-4 | 68 Royal Sonesta (Downtown), D-5 |
| 3 Allegro Chicago, B-6 | 25 Fairmont Chicago, Millennium Park, E-6 | 47 Hyatt Regency Chicago, D-5 | 69 Sable at Navy Pier, F-4 |
| 4 Aloft Hotels (River North), C-4 | 26 Four Seasons Hotel Chicago, D-2 | 48 Hyatt Regency McCormick Place, B-11 | 70 Sheraton Grand (Riverwalk), E-4 |
| 5 Ambassador Chicago, D-1 | 27 HI Chicago Hostel, C-8 | 49 Inn of Chicago, D-4 | 71 The Silversmith Hotel, D-7 |
| 6 Best Western Grant Park Hotel, D-10 | 28 The Gale, E-2 | 50 InterContinental Chicago, D-4 | 72 Sofitel (Magnificent Mile), D-2 |
| 7 Best Western River North Hotel, C-4 | 29 The Godfrey Hotel, C-3 | 51 JW Marriott, B-7 | 73 SpringHill Suites Marriott (River North), C-5 |
| 8 The Blackstone Hotel, D-9 | 30 The Gwen, D-4 | 52 Kimpton Hotel Monaco, D-5 | 74 Swissotel Chicago, E-5 |
| 9 Cambria Hotel Chicago Loop, C-6 | 31 Hampton Inn Suites Downtown (Illinois), C-4 | 53 Kinzie Hotel, C-5 | 75 Thompson Hotel, C-1 |
| 10 Canopy by Hilton Chicago Central Loop, B-8 | 32 Hampton Inn & Homewood Suites (Huron), D-3 | 54 The Kimpton Gray Hotel Chicago, C-7 | 76 Travelodge Downtown Hotel, D-9 |
| 11 Chicago Marriott Downtown Hotel, D-4 | 33 Hampton Inn Majestic, C-7 | 55 The Langham, D-4 | 77 Tremont Chicago Hotel, D-2 |
| 12 Club Quarters/Central Loop, B-7 | 34 Hampton Inn at McCormick Place, (See McCormick Place) | 56 LaQuinta, B-7 | 78 Trump International Hotel & Tower Chicago, D-5 |
| 13 Club Quarters/River Hotel, D-5 | 35 Hilton Chicago, D-9 | 57 Le Méridien Essex Inn, D-9 | 79 Viceroy Hotel, C-1 |
| 14 Claridge House, C-1 | 36 Hilton Garden Inn (Mag Mile), C-4 | 58 Marriott Marquis Chicago, (See McCormick Pl.) | 80 Virgin Hotels Chicago, D-4 |
| 15 Congress Plaza Hotel, D-8 | 37 Hilton Suites Chicago Mag Mile, D-2 | 59 Millennium Knickerbocker Chicago Hotel, D-2 | 81 W Chicago City Center, B-7 |
| 16 Courtyard by Marriott Mag. Mile, D-3 | 38 Holiday Inn & Suites, A-8 | 60 Omni Chicago Hotel, D-3 | 82 W Chicago Lake Shore, F-3 |
| 17 Courtyard by Marriott Downtown/River North, C-4 | 39 Holiday Inn Chicago (Wolf Pt.), A-5 | 61 Palmer House Hilton, D-7 | 83 Warwick Allerton, D-3 |
| 18 Doubletree Hilton Chicago Mag Mile, E-4 | 40 Homewood Suites by Hilton, D-4 | 62 Park Hyatt Chicago, D-2 | 84 The Westin Michigan Avenue, D-2 |
| 19 The Drake Hotel, D-1 | 41 Hotel Chicago, C-5 | 63 The Peninsula Chicago, D-3 | 85 The Westin River North, C-5 |
| 20 Embassy Suites Chicago (River North), C-4 | 42 Hotel Felix, C-3 | 64 The Pendry, D-5 | 86 Whitehall Hotel, D-2 |
| 21 Embassy Suites Chicago (Lakefront), E-4 | 43 Hotel EMC2, D-3 | 65 Renaissance Chicago Hotel, C-5 | 87 The Wit, C-5 |
| 22 Eurostars Mag Mile Hotel, C-3 | 44 Hotel St. Clair (Mag Mile), D-3 | 66 The Ritz-Carlton Chicago, D-2 | |